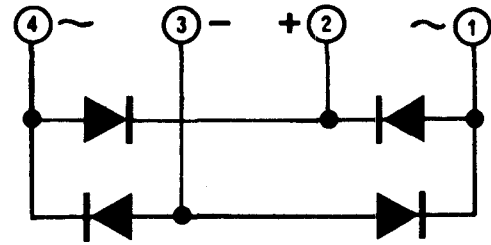


PLASTIC POWER CIRCUITS

PM7A DIODE BRIDGE — Full wave

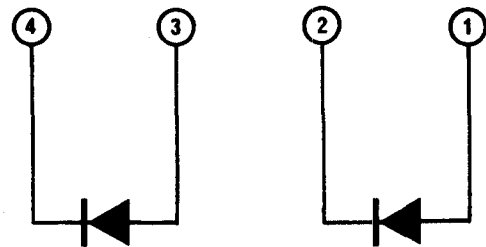
Type No.	Diode Voltage V_{RRM}	Mean Output Current at T_m^*
PM7A2	150 V	10 A at 80°C
PM7A4	300 V	10 A at 80°C
PM7A6	500 V	10 A at 80°C
PM7A8	700 V	10 A at 80°C
PM7A10	900 V	10 A at 80°C
PM7A12	1100 V	10 A at 80°C
PM7A2Q	150 V	15 A at 80°C
PM7A4Q	300 V	15 A at 80°C
PM7A6Q	500 V	15 A at 80°C
PM7A8Q	700 V	15 A at 80°C
PM7A10Q	900 V	15 A at 80°C
PM7A12Q	1100 V	15 A at 80°C
PM7A2R	150 V	20 A at 80°C
PM7A4R	300 V	20 A at 80°C
PM7A6R	500 V	20 A at 80°C
PM7A8R	700 V	20 A at 80°C
PM7A10R	900 V	20 A at 80°C



PM7A

PM6A DIODE PAIR — Separate connections

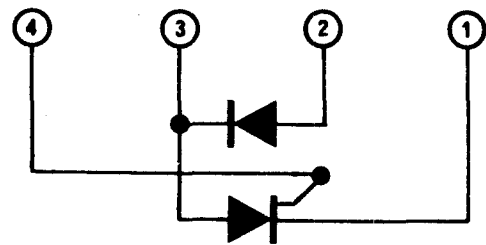
Type No.	Diode Voltage V_{RRM}	Mean Output Current for each diode at T_m^*
PM6A2	150 V	5 A at 80°C
PM6A4	300 V	5 A at 80°C
PM6A6	500 V	5 A at 80°C
PM6A8	700 V	5 A at 80°C
PM6A10	900 V	5 A at 80°C
PM6A12	1100 V	5 A at 80°C
PM6A2Q	150 V	7.5 A at 80°C
PM6A4Q	300 V	7.5 A at 80°C
PM6A6Q	500 V	7.5 A at 80°C
PM6A8Q	700 V	7.5 A at 80°C
PM6A10Q	900 V	7.5 A at 80°C
PM6A12Q	1100 V	7.5 A at 80°C
PM6A2R	150 V	10 A at 80°C
PM6A4R	300 V	10 A at 80°C
PM6A6R	500 V	10 A at 80°C
PM6A8R	700 V	10 A at 80°C
PM6A10R	900 V	10 A at 80°C



PM6A

PM52AG DIODE/THYRISTOR PAIR diode cathode common to thyristor anode

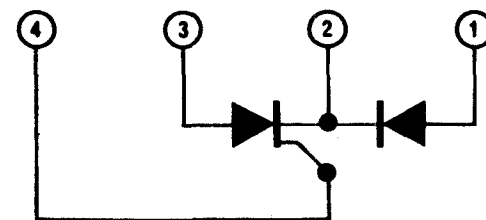
Type No	V_{RRM}		Mean Output Current for each device at T_m^*
	Diode	Thyristor	
PM52A2G	250 V	150 V	5 A at 50°C
PM52A4G	400 V	300 V	5 A at 50°C
PM52A5G	500 V	400 V	5 A at 50°C
PM52A6G	700 V	500 V	5 A at 50°C
PM52A7G	800 V	600 V	5 A at 50°C
PM52A2QG	250 V	150 V	8 A at 50°C
PM52A4QG	400 V	300 V	8 A at 50°C
PM52A5QG	500 V	400 V	8 A at 50°C
PM52A6QG	700 V	500 V	8 A at 50°C
PM52A7QG	800 V	600 V	8 A at 50°C



PM52A

PM5AG DIODE/THYRISTOR PAIR — common cathodes

Type No.	V_{RRM}		Mean Output Current for each device at T_m^*
	Diode	Thyristor	
PM5A2G	250 V	150 V	5 A at 50°C
PM5A4G	400 V	300 V	5 A at 50°C
PM5A5G	500 V	400 V	5 A at 50°C
PM5A6G	700 V	500 V	5 A at 50°C
PM5A7G	800 V	600 V	5 A at 50°C
PM5A2QG	250 V	150 V	8 A at 50°C
PM5A4QG	400 V	300 V	8 A at 50°C
PM5A5QG	500 V	400 V	8 A at 50°C
PM5A6QG	700 V	500 V	8 A at 50°C
PM5A7QG	800 V	600 V	8 A at 50°C



PM5A

* T_m = mounting bracket temperature.